

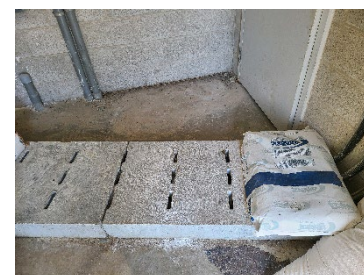
FEED BIOSECURITY

Feed handling on farm is an often-overlooked path of transferring diseases, such as PRRS, PED and PDCOV. Feed that was pathogen-free can become contaminated through improper biosecurity during delivery and handling. Consider the following to reduce your risk:

1. **Have concrete pads under bins and keep your pads and unloading areas clean.** Clean bin areas reduce the risk of pests and wildlife that can transfer diseases being attracted to the barn. Keep unloading areas clear of standing water/mud by using a good gravel base so drivers can maintain good biosecurity too.
2. **Invest in bins that can be augured instead of blown.** Blow pipes that lay on the ground are a risk to bringing in disease. If you must blow in feed, try to have your own blower pipes.
3. **Have skids and/or bags delivered to a neutral location, such as a drive shed.** This prevents delivery equipment from touching the docks, reducing the contamination risk for the feed delivery truck.

OR

Have a clean, raised location in the barn for skid/bag deliveries. Placing skids and bags directly on the ground where people and/or animals may be walking and tracking disease can contaminate the bags. This can also be a visible boundary between inside and outside.



4. **Use a bin monitoring system with your feed supplier.** These systems increase efficiency of deliveries and reduce the number of visits to the farm.
5. **Don't place anything on the ground outside that is going in the barn.** This includes skids/bagged feed or any equipment that might be used.
6. **Keep people and animal traffic away from feed delivery areas.**
7. **Use dedicated equipment.** If using carts, bucket loaders, other farm equipment, tools, etc. for feed/bags, avoid using them for other purposes unless fully cleaned.
8. **Do not handle feed and deadstock in the same areas.** Dead animals often contain pathogens, which could be passed to the feed.
9. **Ensure adequate insect and rodent control inside and out.** Pests are attracted to feed and manure and can move disease between barns.
10. **Disinfect your feed loading docks (and other barn entry points) regularly.** Keep the area clear of debris and use a disinfectant such as lime or Prevail at regular intervals.