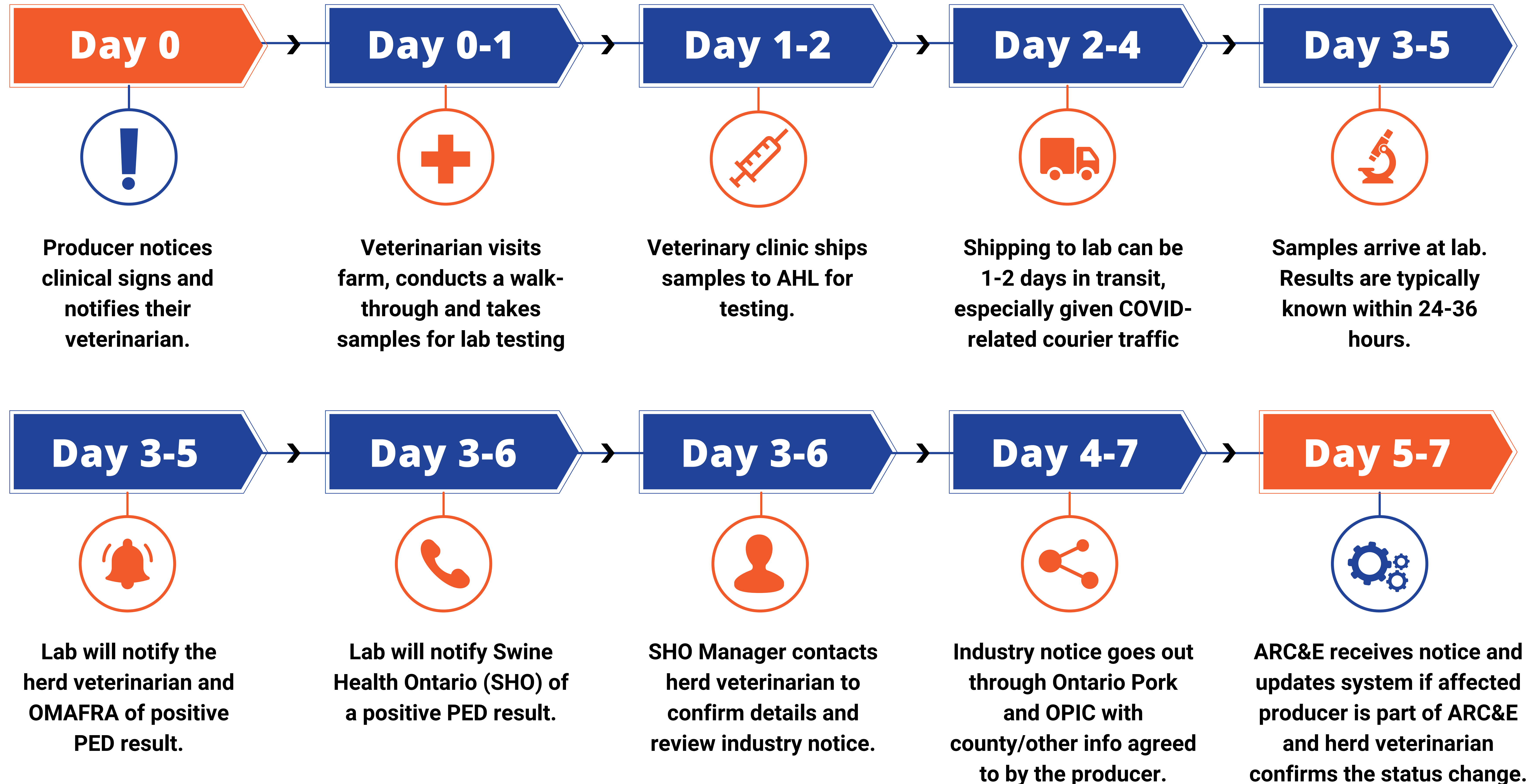


PED Process and Notification Timeline

From the initial consultation, the producer and veterinarian work closely to contain the spread of disease, and investigate potential contacts and clinical signs. Affected producers should contact transporters, processors, connected producers, feed company, etc. as soon as possible. Preventing further spread of disease is the main goal during this time period.



PED Clinical Signs

PED virus usually spreads quickly amongst pigs within a herd. For this reason, it is important for producers seeing potential clinical signs to inform their veterinarians immediately. Clinical signs vary based on different ages of pigs.

Sows

Watery diarrhea, loose feces, vomiting, off feed

Nursing Piglets

Diarrhea, dehydration, vomiting, affected pigs appear skinny, high mortality

Weaners and Growers

Acute watery diarrhea with no blood or mucus, vomiting, off feed

Finishing Pigs

PED can cause very mild clinical signs in finisher pigs. Any level of abnormal diarrhea, that may only last a few days. Do not expect any increase in mortality

Protect Your Herd

Everyday biosecurity measures are crucial to protecting your herd from PED. This virus loves cold weather, so biosecurity is more important than ever.

- *Review the importance of monitoring for clinical signs with your staff and report anything abnormal to your veterinarian immediately.*
- ***DO NOT SHIP PIGS WITH CLINICAL SIGNS** - connect with your veterinarian if you are unsure.*
- *Review and/or adjust your biosecurity protocols with your veterinarian and staff.*
- *Review the importance of biosecurity with all staff, suppliers and general contractors visiting your barn/site.*
- *Ensure all trucks that are allowed on your farm are washed, disinfected and dried before arrival.*
- *Minimize the need to pick up pigs from multiple locations.*

Be Respectful

PED takes an emotional toll on anyone that deals with it on farm.

Respect is needed from one producer to another.

Veterinarians are bound by client/patient confidentiality and cannot discuss specifics of cases with anyone, unless the producer provides prior consent.

The process takes time and trust is essential to ensure it works effectively.

Biosecurity Resources

Swine Health Ontario

Ontario Pork Industry Council

Ontario Pork